

# BUTLER® BUILDING SYSTEMS

*Ideal for religious  
facility construction*



BUILDING SYSTEMS OF CATAWBA COUNTY, INC.  
675 Lenoir Rhyne Blvd SE  
Hickory NC 28602

PO Box 3409  
Hickory NC 28603

Ph 828 327 6677  
Fax 828 327 6678



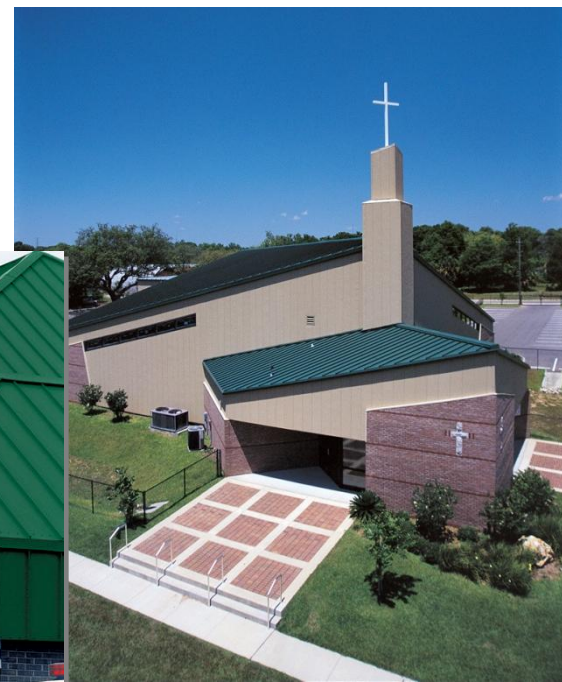
A BlueScope Steel Company

BUILDING IN A NEW LIGHT™

# Building Systems of Catawba County, Inc.

We are a Full-Service Commercial Contractor

Your local Butler Builder<sup>®</sup>, in business since 1986 offering turnkey design/build construction services specializing in church, retail, industrial applications, commercial applications, etc.





# What makes Butler ideal for religious facility construction?

- More than simply a building, it's a true reflection of your community
- Ideal for any size and desired functionality—from small buildings to megaplexes with meeting rooms, gymnasiums, and cafés



# Unlimited design flexibility

Create the beautiful and unique facility that the members of your committee and congregation will be proud to call their own

- Exterior options include wood, brick, stone, or glass in addition to Butler® wall systems





# Interior functionality

Large, uninterrupted space is ideal for sanctuaries, meeting rooms, and recreational areas



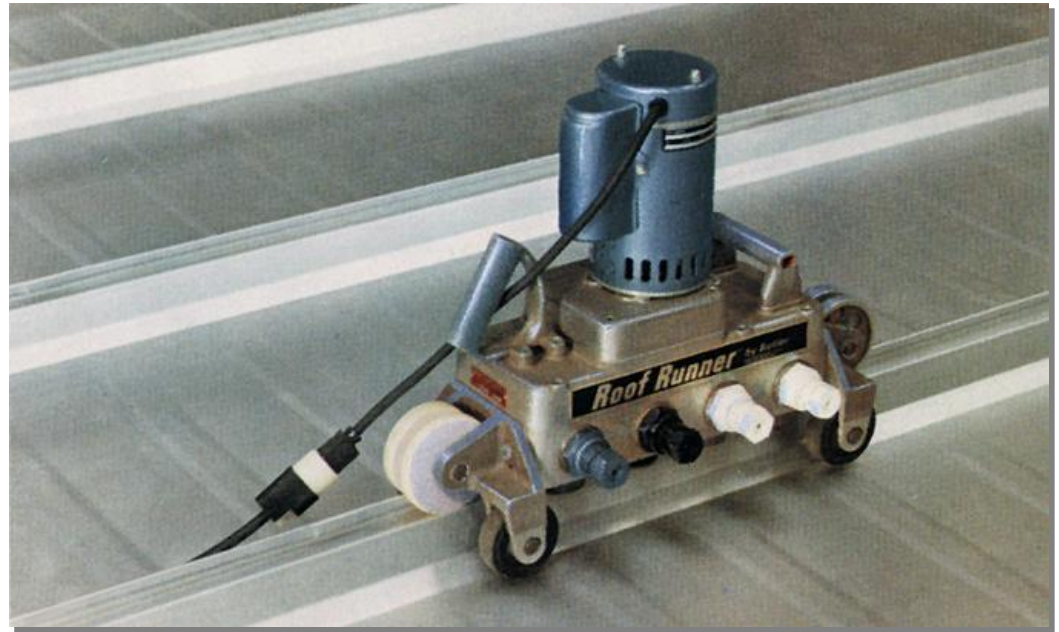
“The students’ rooms are multipurpose. They can move a stage in, have a concert, and move it out.”

Kim Swyden  
Executive Pastor  
Henderson Hills Baptist Church  
Edmond, OK

# The MR-24<sup>®</sup> standing-seam roof system

Installing the industry's #1 standing-seam roof system assures proven long-term performance with low maintenance

- Weathertight system features the same rolled seam technology that's used to seal beverage cans
- Eliminating leaks significantly reduces operating costs





# The MR-24<sup>®</sup> standing-seam roof system

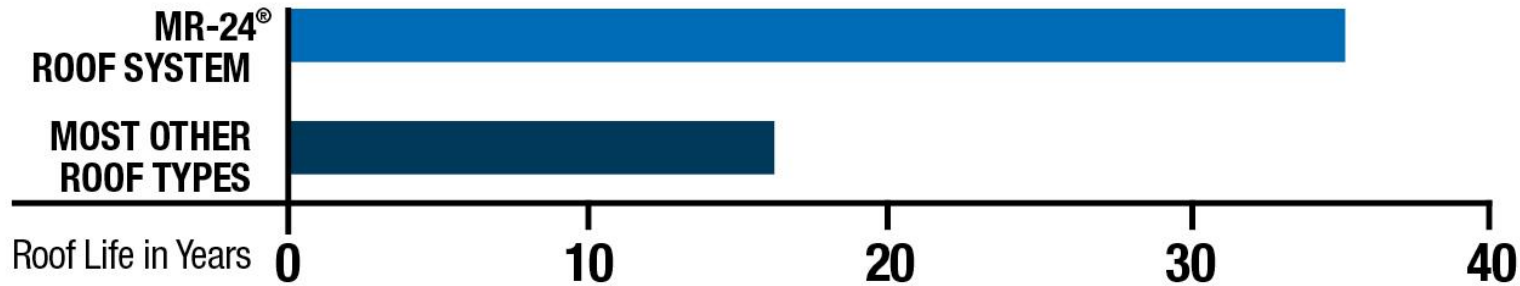
Can save up to 90%  
in roof maintenance  
costs, preventing  
unforeseen funding  
issues for repairs



# The MR-24<sup>®</sup> standing-seam roof system

Proven to last up to twice as long as conventional roofs

## ROOF SYSTEM COMPARISON



(Most Other Roof Types includes: Most Single-ply, EPDM, and Built-up Roof Systems)

Proceedings of the Fourth International Symposium on Roofing Technology. "The Relative Durability of Low-Slope Roofing." Carl G. Cash, 1996.

The Metal Initiative. "Low Slope Roofing Life Cycle Cost Analysis." Ducker Research Company, May 2005.



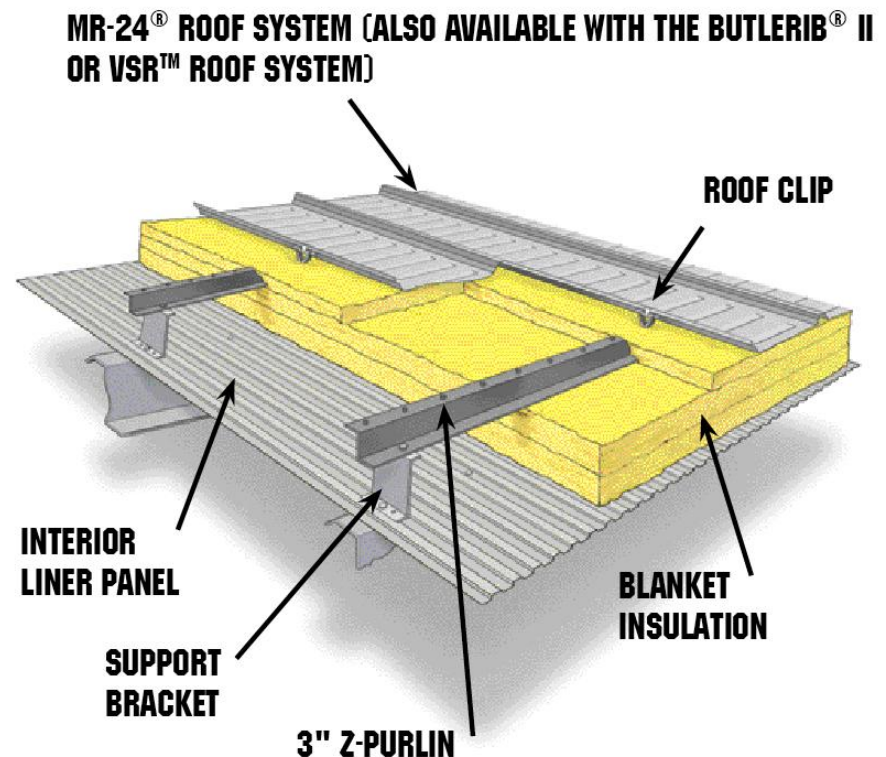
# Energy efficiency

Building an energy-efficient facility is an ideal way to further lower your operating costs

- ThermaLiner™ insulation system adds superior thermal efficiency up to R-40
- KORETECK® panelized building system offers significant energy savings, as well as fast construction



**KORETECK Panelized Building System**



**ThermaLiner Insulation System**

# Expansion flexibility

Butler® structural systems readily accommodate future expansion plans





# More benefits of a Butler® building system

- Precision engineering
- Faster construction
- Lower building costs
- Affordable green
- Built by Building Systems of Catawba County, Inc.



# Precision engineering

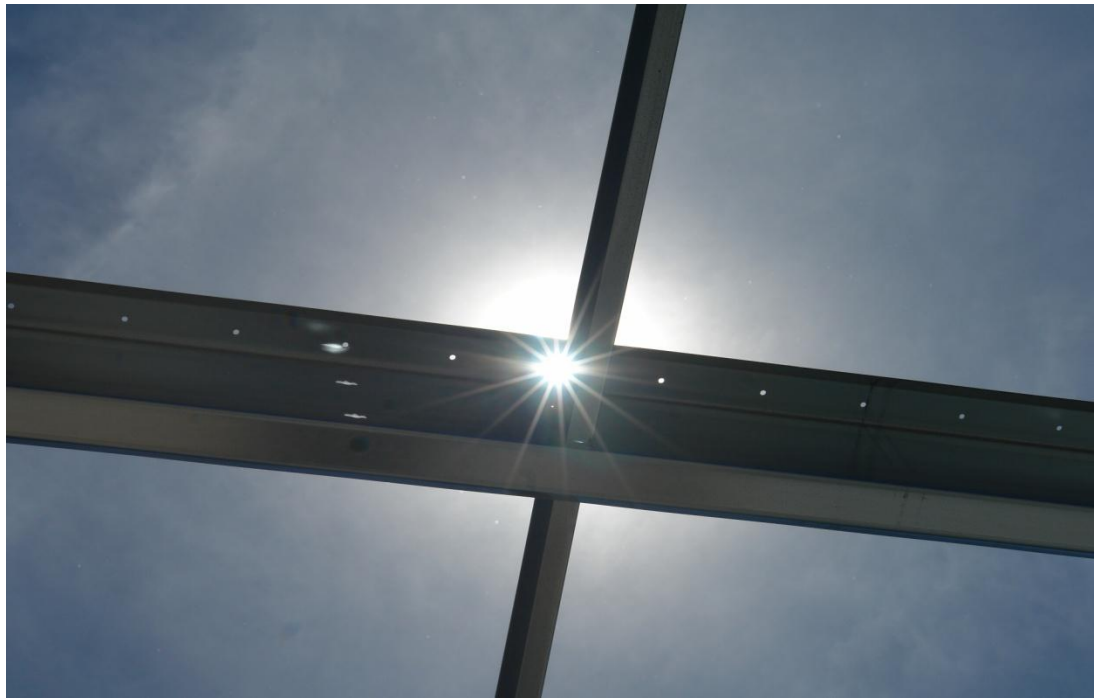
Structural, roof, and wall systems are designed by experienced Butler engineers





# Precision engineering

Exclusive factory punching of structurals allows for precise assembly in the field



# Faster construction

Eliminating the need for on-site modifications allows for faster construction times

- Proven to reduce construction time up to 30% over conventional construction





# Lower building costs

Use of standardized designs and details when possible reduces engineering costs



# Affordable green

Butler offers an affordable way to build a green building that can earn LEED® points

- Made from recycled and recyclable steel
- Energy efficient roof and wall systems
- Sustainable products with long life cycles

**LEED** is  
Leadership in  
Energy and  
Environmental  
Design





# Design/build

Eliminates multiple parties to streamline construction and save time and money



# Backing of BlueScope Steel

Butler's parent company adds even more resources, capabilities, and efficiencies

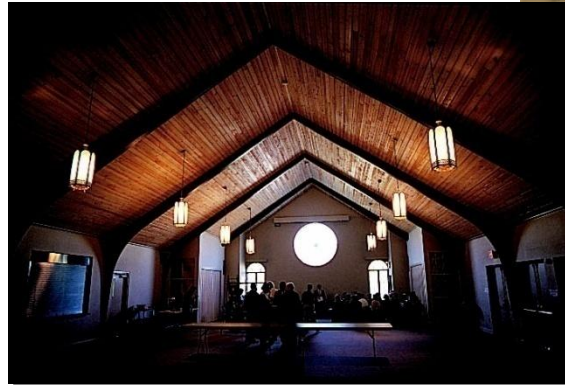
- International flat-steel solutions provider
- Leader in environmental responsibility
- Strong commitment to workplace safety
- [www.bluescopesteel.com](http://www.bluescopesteel.com)





# Choose Butler for your religious facility construction needs

- Low maintenance, and lifecycle savings
- Unlimited design freedom
- Functional interior spaces
- Energy efficiency
- Flexibility for expansion



# Thank you for taking your valuable time to learn about us. We are glad to be of service.

We feel that each member of our team, no matter what his or her job may be, contributes to the overall performance of the company. Therefore, each member is very important. We feel that the most valuable asset a company has is its employees. We have always tried to create a working environment where employees can involve themselves fully--to create, produce and succeed--an environment that holds opportunities for the individual who is willing to work for them.

With this attitude, we are able to provide you with the satisfaction in knowing that your project is the highest priority on our schedule. We will do everything we can to make building your project worry free and exciting!

Respectfully,

The Team at Building Systems of Catawba County Inc.